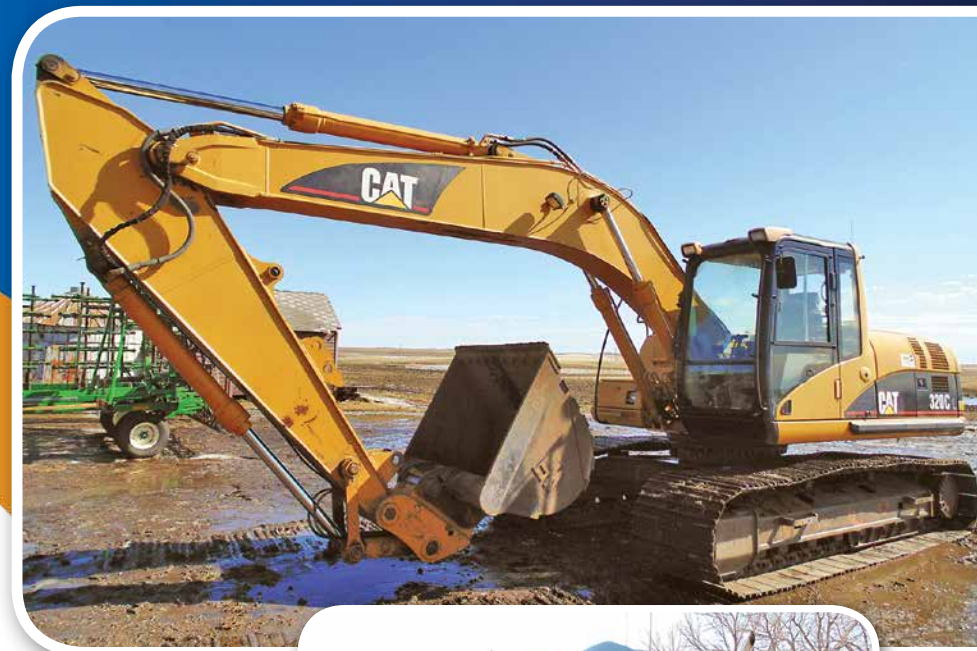




# Farm Retirement AUCTION

Location: 10486 66th St NE, Edmore, ND 58330. From Junction ND 1 & ND 17 near Edmore, ND go 3 miles south, 1 mile east on 66th St NE. From Lakota, ND go north on ND 1 approx. 23-1/2 miles to 66th St, 1 mile east.



## THURSDAY, APRIL 20 | 10AM 2017

**AUCTIONEER'S NOTE:** Major equipment begins selling at 10:30 AM. Live online bidding available on major equipment. Registration, terms, & details at [SteffesGroup.com](http://SteffesGroup.com).

### TRACTORS

**2011 John Deere 9530**, deluxe cab, Field Office, powershift, 4 hyd., 48 gpm pump, return flow, integrated auto steer, diff lock, dual beam radar, electric mirrors, HID lights, rotary beacon light, weight pkg. w/(4) 1,450 lb., (2) 450 lb. outside, & rear inside suitcase weights, Firestone 800/70R38 metric duals, 2,087 hrs., S/N1RW9530PLB024278

**2003 John Deere 9320**, deluxe cab, Field Office, 24 spd., 4 hyd., return flow, diff lock, wired for John Deere ATU w/steering wheel, weight pkg. w/(4) 1,450 lb. inside, (8) 450 lb. outside, & (2) 165 lb. inside rear suitcase weights, Michelin 650/70R42 radials at 85%, 3,654 hrs., S/NRW9320H010650

**1997 John Deere 7810**, MFWD, deluxe cab, powershift, 3 hyd., 3 pt., quick hitch, 540/1000 PTO, diff lock, JD 740 quick tach loader, 96" quick tach bucket, joystick, front fenders, 14.9-30 front tires, 18.4-42 press steel duals, 6,647 hrs., loader S/N740D030047, tractor S/N7810P001753

**MDS pallet forks for John Deere 740 loader**

**MDS quick tach boom for John Deere 740 loader**

### GPS EQUIPMENT

**John Deere ITC globe**, SF1

**John Deere 3000 globe**, SF1

**John Deere 2630 display**, SF1 AutoTrac

**John Deere 2630 display**, SF1 AutoTrac

### SELF-PROPELLED SWATHER

**2012 MacDon 155 UltraGlide dual direction self-propelled swather**, deluxe cab, Cummins diesel, hydro, deluxe controls, JD 200 ATU, HID lights with MacDon D60S draper head, 35", MacDon finger reel, fore/aft, variable spd. reel, sickle, single drive, hyd. end cutters, 380 cutting hrs., 550 engine hrs., draper head S/N217736, swather S/N219751

### HOE DRILL

**2012 John Deere 1830 air hoe drill**, 50', 10" space, full floating hitch, walking tandems across, mechanical pt. depth, Tru Position shanks, 550 lb. trip, 3"x21" rubber packer wheels, rock guards, 3" Dutch openers, primary seed flow monitor, 2012 John Deere 1910 commodity cart, 340 bu., 3-compartment, vari-rate, single shoot, (3) green & (1) yellow seed rollers, 3-tank power calibration, 12" hyd. fill conveyor, conveyor hopper screens, 710/70R38 rear tires, dual wheel front center, cart S/N1A81910HLCD750143, approx. 6,500 acres total

### TILLAGE EQUIPMENT

**2014 John Deere 2410 chisel plow**, 52', 5 section, 12" space, full floating hitch, single pt. depth, walking tandems across, 28" Tru Position shanks, 650 lb. trip, John Deere 3-bar harrow, all new under warranty spring tower replacement in 2016, S/N1N02410XLE0755507

**2014 John Deere 2410 chisel plow**, 42', 3 section, full floating hitch, single pt. depth, walking tandems across, 28" Tru Position shanks, 650 lb. trip, Summers 106 heavy duty 3-bar harrow, all new under warranty spring tower replacement in 2016, S/N1N02410XPE0755563

**2013 John Deere 2623 tandem disc**, 40', 9" space, plumbed rear hitch, hyd. leveling, single pt. depth, walking tandems across, rock flex cushion gang, 26" cone blades, S/N1N02623XLD0750723

**2012 John Deere 2210 field cultivator**, 58-1/2', 6" space, full floating hitch, single pt. depth, walking tandems across, factory rear hitch, John Deere 4-bar harrow, set up with Raven twin cooler vari-rate NH3, Raven 5-section control, John Deere rate controller, 9" sweeps, injector tips

**2012 Summers SuperHarrow Plus**, 72', hyd. fold, adj. sections, hyd. down pressure, 9/16" teeth

**2009 Unverferth single basket rolling harrow**, 44', hyd. fold, light pkg., unattached single bar harrow

**Wil-Rich auto reset hinged plow**, 10x18", on land hitch

### EXCAVATOR

**2007 Caterpillar 320CL**, boom 18'7", mechanical thumb, 42" heavy duty bucket w/New teeth, 60" ditching bucket, heavy duty side cutters, side bar protectors, hyd. quick tach, 32" pads, 5,345 actual hrs., S/N0PAB07659

### SEMI TRACTOR

**2003 Volvo VNL430 conventional**, D12 Volvo, 425 hp., 10 spd. manual, engine brake, air ride, air side 5th, A/C, electric windows, twin aluminum fuel tanks, air up/down pusher steerable 3rd axle, full fenders, 22.5 tires on 3rd axle, 11-24.5 front & rear tires on aluminum rims, 589,811 miles

### PICKUPS & CAR

**1998 GMC 3500 Sierra one ton dually**, ext. cab, leather, 6.5 turbo diesel, automatic, 8' box, A/C, power locks & windows, 140,218 actual miles

**1993 GMC 1500 Sierra**, reg. cab, 350 V8, automatic, 4WD, A/C, power windows & locks, 89,605 actual miles

**1997 Chevrolet Lumina**, 4 door, 3.1L V6, automatic, 98,000 actual miles

### TRAILERS

**2009 Wilson tri-axle hopper bottom**, 46'x102'x78", ag hopper, electric tarp & traps with remote, air ride, air up/down 3rd axle, single row lights, SS corners, air scale, 11-24.5 tires on aluminum rims

**1999 Trail King tri-axle lowboy**, 48'x102", 40 ton, air ride, 24'x102" deck, flip-out outriggers, open boom trough, full fenders, front flip ramps, non-ground bearing, self-contained hyd., Honda electric start, full fenders, 255/70R22.5 virgin tires on steel rims, New wood floor

**2012 Vulcan header trailer**, 35', 4-wheel

**1996 Dorsey tandem axle water trailer**, 38', spring ride, (3) side doors, rear cargo door, 11-24.5 tires on steel rims, 1,650 gal. poly tank, (2) 1,500 gal. poly tanks, (3) 30 gal. chem TruClean mix tanks, 2" gas transfer pump, plumbed 2"

**(2) Shop-built single axle utility trailers**, 4'x8', Bill of Sale

**Shop-built single axle utility trailer**, 5-1/2'x10', Bill of Sale

### SPRAYERS

**2004 Rogator 1064 self-propelled sprayer**, 100' hyd. fold boom, 1,100 gal. SS tank, Outback auto steer, foamer, hyd. tread adj., triple nozzle bodies, auto boom control, fenders, 380/90R46 tires, approx. 3,000 hrs.

**Set flotation tires**, 620/70R38 on rims, for Rogator 1064

**Flexi-Coil 65 pull-type sprayer**, 90' hyd. assist folding boom, 1,000 gal. poly tank, single nozzle bodies, hyd. pump, MicroTrak auto rate monitor

### HOPPER BINS, DRYER, & SHED

**StorKing hopper bin**, 3,200 bu., ladder, on skids

**StorKing hopper bin**, 18" air fan w/10" loadout auger, 10 hp. motor, 1 phase

**2008 Farm Fans CF5A 510 grain dryer**, continuous flow or staged automatic, 1 phase, DriTech control, approx. 600 bph at 5 points, 300 hrs.

**Insulated dryer shed**, 6'x8', metal siding

### GRAIN HANDLING EQUIPMENT

**Westfield MK auger**, 61'x10", low pro swing hopper, hyd. lift

**Westfield auger**, 51'x8", PTO or electric, 7-1/2 hp., 1 phase

**Westfield auger**, 41'x8", 7-1/2 hp. electric, 1 phase

**Westfield auger**, 36'x8", 7-1/2 hp. electric, 1 phase

**Batco 1515 belted transfer auger**, hyd.

**Wheatheart transfer hopper**, 7.5 hp. electric

### GRAIN HANDLING EQUIPMENT

**Westfield loadout auger**, 51'x10", damaged

**Motomco grain moisture tester**, balance beam scale

### OTHER EQUIPMENT

**2013 Ashland hyd. push-off scraper**, 15-1/2 yd.

**2010 DMC Pulcat hyd. pull-type blade**, 14'

**2007 John Deere HX20 mower**, 20', hyd. fold, single blade w/protector, rear spring susp., front & rear safety chains

**2011 Schulte SDX 110 snowblower**, 3 pt., hyd. chute & deflector, 1000 PTO

**2012 Farm King pull-type steel swath roller**, 10'

**Summers hyd. rockpicker**, 3 bat, hyd. swing hitch

**(2) Steel flare top trailers**, 4-wheel

### LAWN TRACTOR

**John Deere X720 lawn tractor**, 24 hp. gas, hydro, 2-wheel steer, power steering, hyd., 60" deck

### COLLECTIBLE TRACTOR & ATTACHMENTS

**1953 Ford NAA Diamond Jubilee**, open station, gas, gear, 3 pt., PTO

**Disc**, 6", 3 pt.

**Cultivator**, 8", 3 pt.

### TANKS

**1,000 gal. fuel tank**, Fill-Rite 30 gpm pump

**(4) 1,000 gal. fuel tanks**, no pumps

**Bud's Welding field service unit**, 180 gal., 12v pump

**Bud's Welding field service unit**, 140 gal., 12v pump

### PARTS

**(44) Yetter vertical tillage chisel plow coulters**

**Black Diamond gas engine**, 6 cyl., off IHC 122 pull-type combine

**John Deere hood**, side panels & side screens for 4010-20

**Power steering unit for IHC M**

**Implement parts & supplies**

### SHOP EQUIPMENT & FARM SUPPORT ITEMS

**Aaladin hot water washer**, hose reel, trigger wand, on 4-wheel cart

**Extension ladders**, 20' & 25'

**Shop cherry picker**

**Portable shop compressor**

**Tools & shop items**

**Electric motors**

**Heavy duty hyd. winch**

**Farm support items**

**LEE & BARBARA SETTINGSGARD | 701.360.1426**  
or Brad Olstad at Steffes Group, 701.237.9173 or 701.238.0240

**TERMS:** All items sold as is where is. Payment of cash or check must be made sale day before removal of items. Statements made auction day take precedence over all advertising. \$35 documentation fee applies to all titled vehicles. Titles will be mailed. Canadian buyers need a bank letter of credit to facilitate border transfer.

Steffes Group, Inc., 2000 Main Avenue East, West Fargo, ND 58078

Brad Olstad ND319, Scott Steffes ND81, Bob Steffes ND82, Max Steffes ND999, Ashley Huhn ND843, Eric Gabrielson ND890, Randy Kath ND894 | 701.237.9173 | [SteffesGroup.com](http://SteffesGroup.com)

